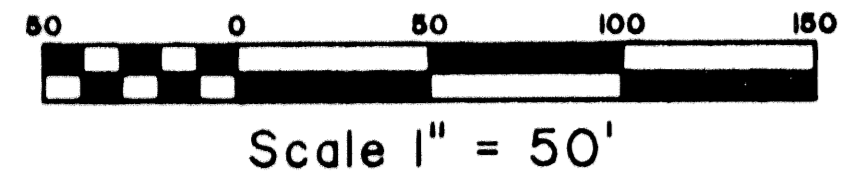
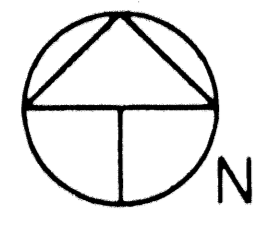


SADDLEBROOK VILLAGE P.U.D.

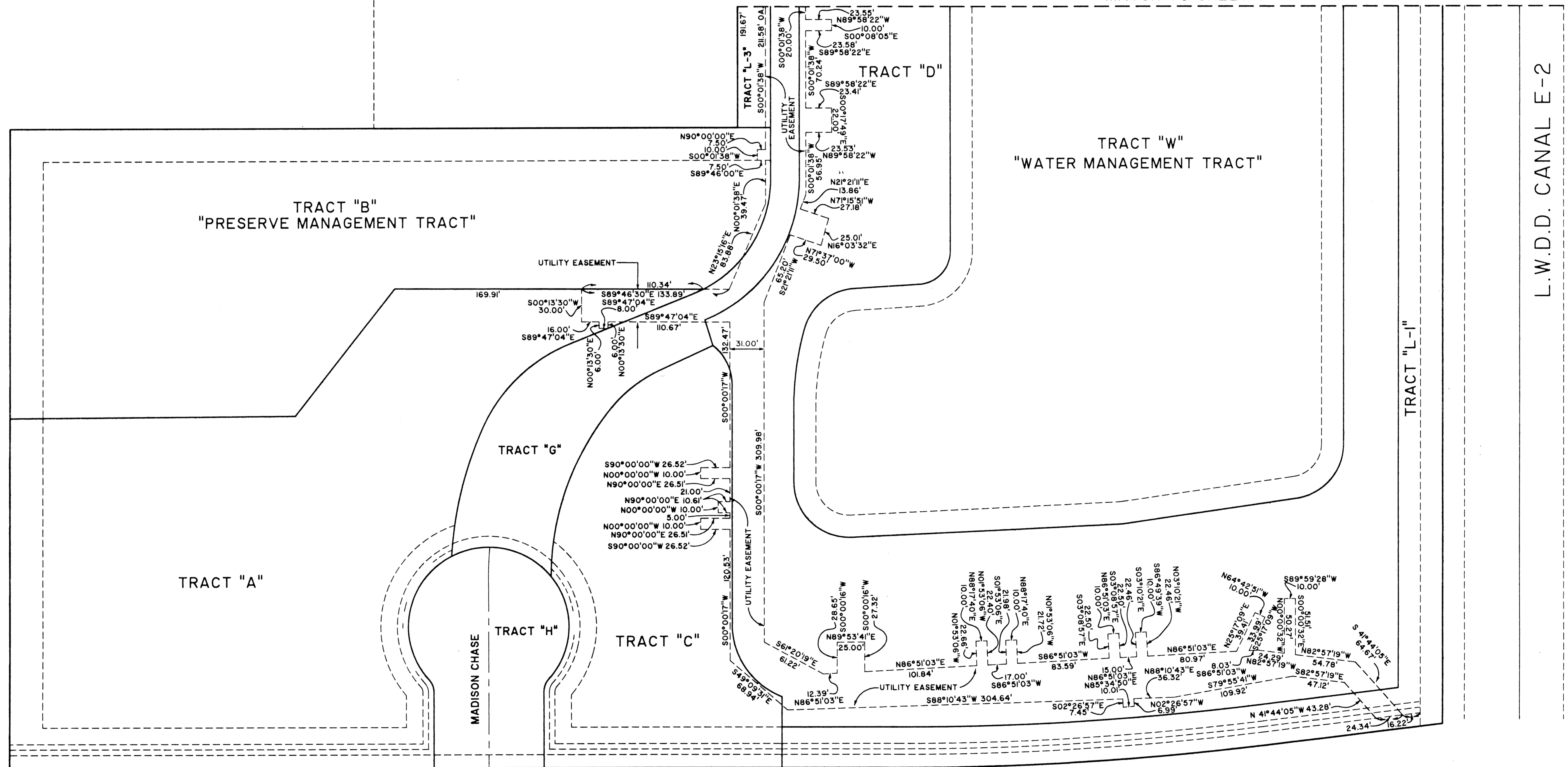
BEING A REPLAT OF A PORTION OF TRACTS 7, 14, 15 AND 30 FOOT RIGHT-OF-WAY, PALM BEACH FARMS COMPANY PLAT NO. 3, AS RECORDED IN PLAT BOOK 2, PAGES 45 THROUGH 54, OF THE PUBLIC RECORDS OF PALM BEACH COUNTY, FLORIDA AND LYING IN SECTIONS 29 AND 32, TOWNSHIP 43 SOUTH, RANGE 42 EAST, PALM BEACH COUNTY, FLORIDA.

SHEET 6 OF 8

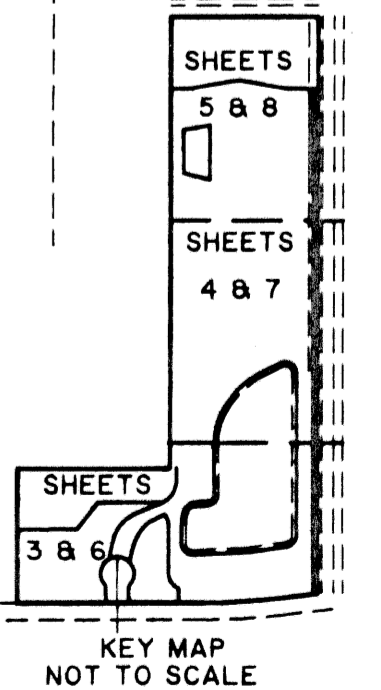


STATE OF FLORIDA
COUNTY OF PALM BEACH
THIS PLAT WAS FILED FOR RECORD AT _____
M, THIS _____ DAY OF _____
AND DULY RECORDED IN PLAT BOOK NO. _____
ON PAGE _____
DOROTHY H. WILKEN, CLERK OF THE CIRCUIT COURT
BY _____ D.C.

MATCH TO SHEET 7

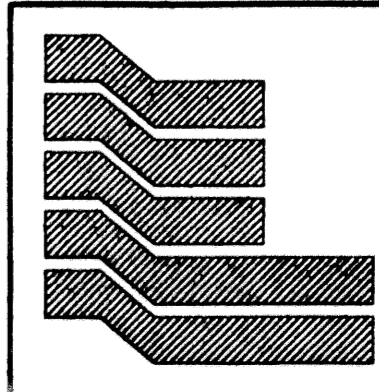


L.W.D.D. CANAL E-2



KEY MAP NOT TO SCALE

SADDLEBROOK VILLAGE PUD
PLAT 68
PLANNING PUD
ZIP CODE 33411
DATE 10/6/5
PUD NAME



Landmark Surveying & Mapping Inc.
1850 Forest Hill Boulevard
Ph. (561) 433-5405 Suite 100 W.P.B. Florida

SADDLEBROOK VILLAGE
P.U.D.